



CHAINZONE TECHNOLOGY(FOSHAN) CO., LTD.

Add:Chainzone Tech. Industrial Park, Taishan Bei RD., Sanshan Avenue, Nanhai District, Foshan City, Guangdong Province, P.R.China 528200

Tel: +86-757-86393001

E-mail: sales@chainzone.com

Web: www.chainzone.com

CHAINZONE

CHAINZONE

www.chainzone.com

CHAINZONE TECHNOLOGY(FOSHAN) CO., LTD.

Interactive Outdoor Digital Information System Expert



2025

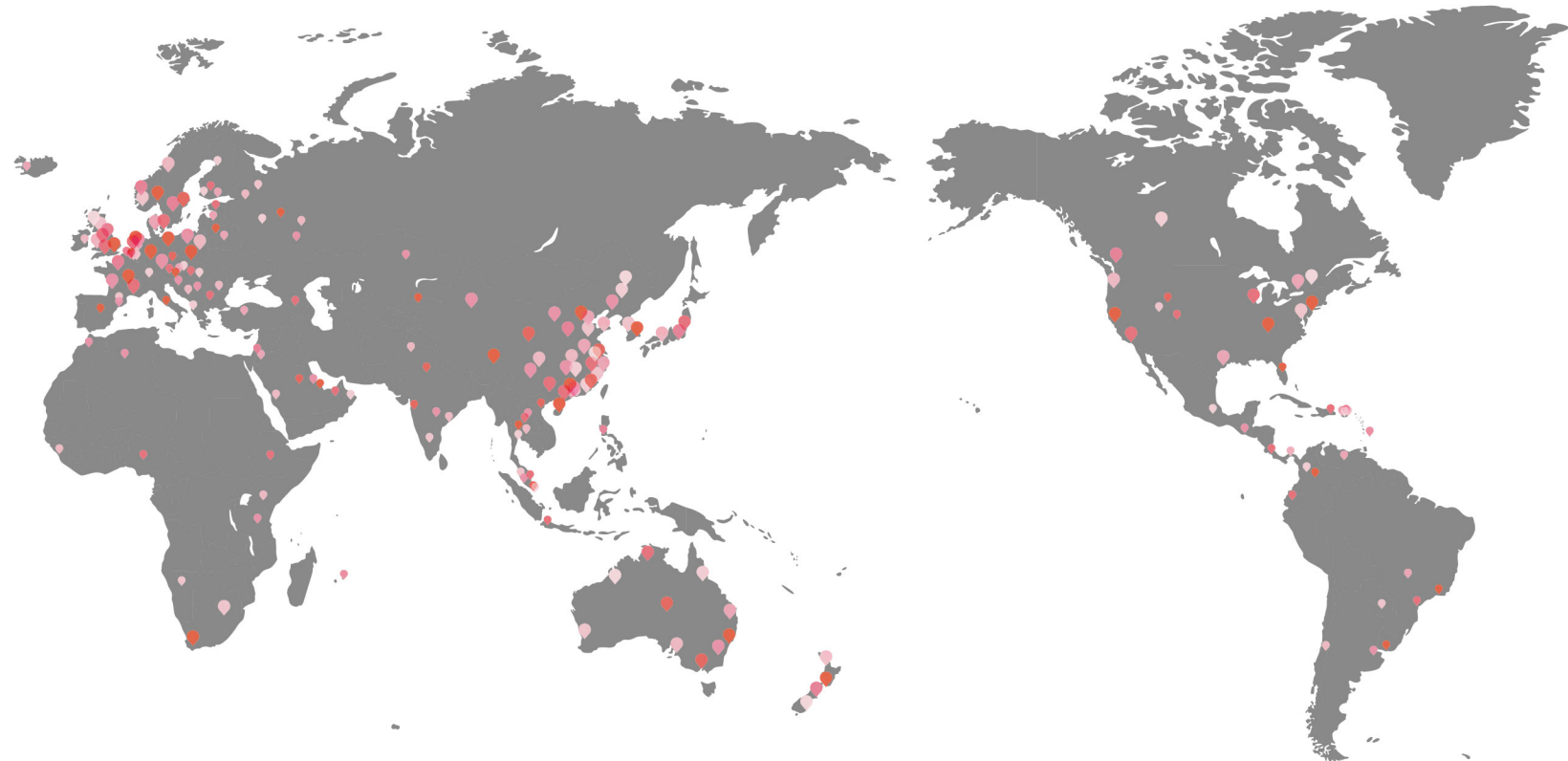
ABOUT CHAINZONE

Chainzone Technology (Foshan) Co., Ltd. is a specialized developer and manufacturer of intelligent traffic, intelligent display solutions. Founded in 2000, Chainzone is an ISO9001, ISO14001 & ISO45001 certified firm and a provincial government-nominated "High-Tech Enterprise", Chainzone has two trade marks, "ChainZONE" and "iMPOSA", which have been successfully registered in 54 countries and regions around the world. We also have several patents for iMPOSA design registered in China and USA.

We plan to complete the construction of our new headquarters and R&D production base by 2025, with a total floor area exceeding 66,000 square meters. At present, our R&D center has a staff composition of 45% dedicated to research and development, enabling us to continuously provide customers with innovative products and rapid technical support. Additionally, we have established our own experimental testing center and have implemented a management system that meets international standards for production and service. Our products, spanning multiple models, have obtained a range of domestic and international certifications including CCC, EN12966, CE, EMC, UL, ETL, FCC, TUV, and RoHS. We strive to ensure that each and every product meets our customers’ satisfaction.



Our products are sold overseas, with a customer base in 120 countries and regions, including the United States, Canada, Japan, South Korea, Singapore, Thailand, Germany, France, Spain, Norway, Kenya, Algeria, Australia, New Zealand, Hong Kong and Macau, etc.



CERTIFICATE



CONTENT

Beyond What You Can See

01 OUTDOOR SERIES

Plus X	03
V-Plus	05
Plus 4	07
E4 Pro	09
E4 H	11
E XL	13
E4	15
E Fine	17
Velo 5	19

02 INDOOR SERIES

Lite Pro 3	23
Lite XL	25

03 CONTROLLERS

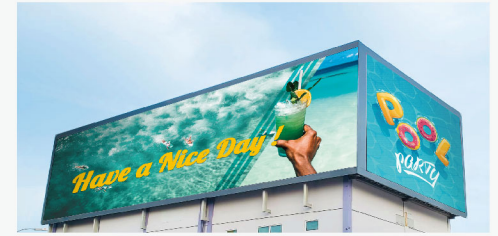
Chain Station	29
MPU9000	31
LDU8600	33
LDU4100	34

04 SOLUTIONS

DOOH SOLUTION	37
SIGNAGE & INFORMATION SOLUTION	41
SPORTS SOLUTION	45
INDOOR SOLUTION	49
ARTISTIC SOLUTION	53

N1 OUTDOOR SERIES

www.chainzone.com





High Durability with True Colors

Plus X



PRODUCT FEATURES

- Modular Design, Easy Maintenance
- MiniLOB Design, Excellent Quality with Less Power
- Less Heat Design, Extending the Operating Lifespan
- Redundant Cable Design, High Stability
- Lower Management Cost, Easily Manage a Network of Displays



SPECIFICATIONS

Model	PLX-6.25MA	PLX-10.4MA	PLX-6.35MA	PLX-10.16MA	PLX-16.6LA
Pixel Pitch (mm)	6.25	10.4	6.35	10.16	16.6
Pixel Configuration	Mini LOB				LOB
Module Size (mm) (H x W)	250×500		304.8×304.8		400×400
Module Resolution (pixels) (H x W)	40×80	24×48	48×48	30×30	24×24
Cabinet Size (H x W)	750×1000		914.4×609.6		1200×800
Cabinet Resolution (pixels) (H x W)	120×160	72×96	144×96	90×60	72×48
Driver Voltage ①	Dual-Voltage				
Backshell Material ①	Fiberglass Plastic				
Brightness (cd/m²) ①②	8000		10000		
Refresh Rate (Hz)	3840				
Grey Level	16 Bit				
Viewing Angle (H/V)	140° / 50°				100° / 50°
Power Consumption Max. (W/m²) ②	360		400		200
Power Consumption Avg. (W/m²) ②	120		133		66
IP Rating	IP65				
Maintenance	Front & Rear				
Weight (kg/m²)	24				26
Working Temperature / Humidity	-30℃~50℃ / 10%-90% RH				
Storage Temperature / Humidity	-40℃~70℃ / 10%-90% RH				

①: Based on different hardware sepcification ②: Theoretical values only. All specifications are subject to the actual product.



Born for Excellence

V-Plus



Energy Saving



Block Structure



Lens On Board



Front & Rear Service



Secondary Power Supply

PRODUCT FEATURES

- LOB (Lens On Board) Technology Available
- IP67 Protection Dust-Proof and Waterproof
- DC Power Solution Available
- High Stability with Power & Signal Redundancy
- 10,000nits Brightness Available



SPECIFICATIONS

Model	VPDC-8.33SA	VPDC-10SA	VPDC-16.6LA
Pixel Pitch (mm)	8.33	10	16.6
Pixel Configuration	SMD		LOB
Module Size (mm) (H x W)	500×600		600×400
Module Resolution (pixels) (H x W)	60×72	50×60	36×24
Cabinet Size (H x W)	Flexible ③		
Cabinet Resolution (pixels) (H x W)			
Driver Voltage ①	Dual-Voltage		
Backshell Material ①	Fiberglass Plastic		
Brightness (cd/m²) ①②	8000		10000
Refresh Rate (Hz)	3840		
Grey Level	16 Bit		
Viewing Angle (H/V)	160° / 80°	160° / 69°	70° / 31°
Power Consumption Max. (W/m²) ②	500		210
Power Consumption Avg. (W/m²) ②	150		75
IP Rating	IP67		
Maintenance	Front & Rear		
Weight (kg/m²)	24		29
Working Temperature / Humidity	-30℃~50℃ / 10%~90% RH		
Storage Temperature / Humidity	-40℃~70℃ / 10%~90% RH		

①: Based on different hardware sepcification ②: Theoretical values only. All specifications are subject to the actual product. ③: Receiving card Units on Modules. Cabinet size could be flexible.



Created for Standard, Simple, Speedy, Multi-shaped
4S DOOH Solution

Plus 4



Parts Delivery



Easy Assembly



Energy Saving



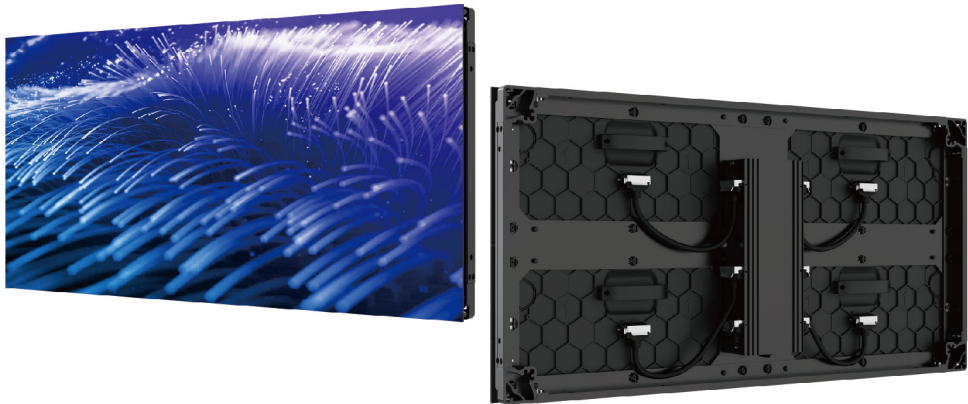
Front & Rear Service



Light & Thin

PRODUCT FEATURES

- Simple Maintenance, Easy Use
- Multiple Shapes Available, Including Curved and Right Angle Displays
- Standard Assembly, Easy Installation
- Speedy Delivery, Short Lead-time



SPECIFICATIONS

Model	PL4-3.9SA	PL4-4.8SA	PL4-6.25SA	PL4-6.94SA	PL4-10.4SA	PL4-4.76SA	PL4-6.67SA	PL4-8.33SA	PL4-10SA
Pixel Pitch (mm)	3.9	4.8	6.25	6.94	10.4	4.76	6.67	8.33	10
Pixel Configuration	SMD								
Module Size (mm) (H x W)	250×500					300×400			
Module Resolution (pixels) (H x W)	64×128	52×104	40×80	36×72	24×48	63×84	45×60	36×48	30×40
Cabinet Size (H x W)	500×1000					600×800			
Cabinet Resolution (pixels) (H x W)	128×256	104×208	80×160	72×144	48×96	126×168	90×120	72×96	60×80
Driver Voltage ①	Singal-Voltage								
Backshell Material ①	Fiberglass Plastic	Fiberglass Plastic /Aluminum Plastic	Fiberglass Plastic			Aluminum Plastic			
Brightness (cd/m ²) ①②	7000	7000	9000			7000	9000		
Refresh Rate (Hz)	3840								
Grey Level	14 Bit-16 Bit								
Viewing Angle (H/V)	160° / 160°	160° / 70°	160° / 91°	160° / 72°	160° / 91°	160° / 71°	160° / 75°	160° / 78°	160° / 75°
Power Consumption Max. (W/m ²) ②	580								
Power Consumption Avg. (W/m ²) ②	174								
IP Rating	IP65								
Maintenance	Front & Rear								
Weight (kg/m ²)	25								
Working Temperature / Humidity	-30℃~50℃ / 10%~90% RH								
Storage Temperature / Humidity	-40℃~70℃ / 10%~90% RH								

①: Based on different hardware sepcification ②: Theoretical values only. All specifications are subject to the actual product.



A Cool DOOH Solution

E4 Pro



Energy Saving



10,000+ Nits



Fast Heat Dissipation



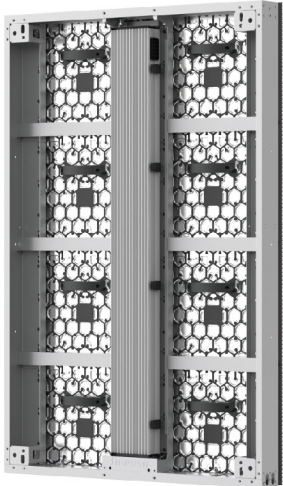
Front & Rear Service



16:9 Ratio

PRODUCT FEATURES

- Suitable for Extremely Hot Environment
- Aluminum Back Cover Design for Efficient Heat Dissipation
- 10,000nits Brightness Available
- Curved and Fine Angle Displays Available
- Suitable for 2K/4K/8K Display



SPECIFICATIONS

Model	E4P-4.76SA	E4P-6.67SA	E4P-8.33SA	E4P-10SA	E4P-10LA ^③
Pixel Pitch (mm)	4.76	6.67	8.33	10	10
Pixel Configuration	SMD				LOB
Module Size (mm) (H x W)	300×400				
Module Resolution (pixels) (H x W)	63×84	45×60	36×48	30×40	30×40
Cabinet Size (H x W)	1200×800				900×800
Cabinet Resolution (pixels) (H x W)	252×168	180×120	144×96	120×80	90×80
Driver Voltage ^①	Singal-Voltage	Dual-Voltage	Singal-Voltage	Dual-Voltage/Singal-Voltage ^③	Singal-Voltage
Backshell Material ^①	Aluminum Plastic			Aluminum Plastic/Fiberglass Plastic ^③	Fiberglass Plastic
Brightness (cd/m ²) ^{①②}	7500	10000		10000 / 8000 ^③	6000
Refresh Rate (Hz)	3840				
Grey Level	14 Bit-16 Bit				
Viewing Angle (H/V)	160° / 71°	160° / 75°	160° / 78°	160° / 75°	160° / 75°
Power Consumption Max. (W/m ²) ^②	680			680 / 600 ^③	600
Power Consumption Avg. (W/m ²) ^②	204			204 / 180 ^③	180
IP Rating (Front / Rear)	IP65 / IP54				
Maintenance	Front & Rear				Rear
Weight (kg/m ²)	29				
Working Temperature / Humidity	-30℃~50℃ / 10%~90% RH				
Storage Temperature / Humidity	-40℃~70℃ / 10%~90% RH				

①: Based on different hardware sepcification ②: Theoretical values only. All specifications are subject to the actual product. ③: Sport Perimeter Version Only



It Could Be Your First Great Display

E4 H



Honeycomb Back Cover



Front & Rear Service



High Contrast Ratio



Light & Thin



Easy Maintenance

PRODUCT FEATURES

- Ultra high contrast, no fear of direct sunlight
- Professional cooling design brings higher stability
- Die-cast aluminum back cover enhances thermal conductivity and heat dissipation, thus reducing the internal heat



SPECIFICATIONS






Model	E4H-6.67SB	E4H-8SB	E4H-10SB	E4H-16SB	E4H-6.67SA	E4H-8SA	E4H-10SA	E4H-16SA	E4H-16.6LA
Pixel Pitch (mm)	6.67	8	10	16	6.67	8	10	16	16.6
Pixel Configuration	SMD								LOB
Module Size (mm) (H x W)	480×320				480×320 & 320×320				600×400
Module Resolution (pixels) (H x W)	72×48	60×40	48×32	30×20	72×48 & 48×48	60×40 & 40×40	48×32 & 32×32	30×20 & 20×20	36×24
Cabinet Size (H x W)	960×1280				960×1280 & 640×1280				1200×1200
Cabinet Resolution (pixels) (H x W)	144×192	120×160	96×128	60×80	144×192 & 96×192	120×160 & 80×160	96×128 & 64×128	60×80 & 40×80	72×72
Driver Voltage ①	Singal-Voltage								
Backshell Material ①	Fiberglass Plastic								
Brightness (cd/m ²) ①②	6000				9000				10000
Refresh Rate (Hz)	1920-3840				3840				
Grey Level	14 Bit-16 Bit								
Viewing Angle (H/V)	160° / 75°	160° / 74°	160° / 71°	160° / 93°	160° / 75°	160° / 74°	160° / 71°	160° / 93°	100° / 50°
Power Consumption Max. (W/m ²) ②	700				630				220
Power Consumption Avg. (W/m ²) ②	210				189				66
IP Rating (Front / Rear)	IP65 / IP54								
Maintenance	Rear				Front & Rear				
Weight (kg/m ²)	27								32
Working Temperature / Humidity	-30℃~50℃/10%~90%								
Storage Temperature / Humidity	-40℃~70℃/10%~90%								

①: Based on different hardware sepcification ②: Theoretical values only. All specifications are subject to the actual product.



Where Quality Meets Cost-effectiveness

EXL

- 
Honeycomb Back Cover
- 
Patented Mask
- 
High Contrast Ratio
- 
Block Structure
- 
Light & Thin

PRODUCT FEATURES

- High Precision Aluminum Profile Cabinet
- High Contrast Ratio
- Simple Maintenance Design
- Wide Viewing Angle
- High Protection Level for Outdoors



SPECIFICATIONS

Model	EXL-6.67SB	EXL-8SB	EXL-10SB	EXL-16SB	EXL-6.67SF	EXL-8SF	EXL-10SF	EXL-16SF
Pixel Pitch (mm)	6.67	8	10	16	6.67	8	10	16
Pixel Configuration	SMD							
Module Size (mm) (H x W)	320×480							
Module Resolution (pixels) (H x W)	48×72	40×60	32×48	20×30	48×72	40×60	32×48	20×30
Cabinet Size (H x W)	1280×960				1280×1440			
Cabinet Resolution (pixels) (H x W)	192×144	160×120	128×96	80×60	192×216	160×180	128×144	80×90
Driver Voltage ①	Singal-Voltage							
Backshell Material ①	Fiberglass Plastic							
Brightness (cd/m²) ①②	8500							
Refresh Rate (Hz)	3840							
Grey Level	14 Bit-16 Bit							
Viewing Angle (H/V)	160° / 77°	160° / 87°	160° / 71°	160° / 102°	160° / 77°	160° / 87°	160° / 71°	160° / 102°
Power Consumption Max. (W/m²) ②	650							
Power Consumption Avg. (W/m²) ②	195							
IP Rating (Front / Rear)	IP65				IP65 / IP54			
Maintenance	Rear				Front			
Weight (kg/m²)	30				31			
Working Temperature / Humidity	-30℃~50℃ / 10%~90% RH							
Storage Temperature / Humidity	-40℃~70℃ / 10%~90% RH							

①: Based on different hardware sepcification ②: Theoretical values only. All specifications are subject to the actual product. ③: Sport Perimeter Version Only

The Comprehensive Choice for Outdoor Displays

E4



Honeycomb Back Cover



Large Viewing Angle



High Contrast Ratio



Rapid Heat Dissipation



Light & Thin

PRODUCT FEATURES

- Block structure design saves installation costs and time
- Professional cooling design brings higher stability
- 90° and curved display both available



SPECIFICATIONS

Model	E4-3.9SB	E4-4.8SA	E4-6.25SA	E4-6.94SB	E4-10.4SA	E4-10MA
Pixel Pitch (mm)	3.9	4.8	6.25	6.94	10.4	10
Pixel Configuration	SMD					MiniLOB
Module Size (mm) (H x W)	250 × 500					320 × 480
Module Resolution (pixels) (H x W)	64×128	52×104	40×80	36×72	24×48	32 × 48
Cabinet Size (H x W)	1000 × 1000					1280× 960
Cabinet Resolution (pixels) (H x W)	256×256	208×208	160×160	144×144	96×96	128 × 96
Driver Voltage ①	Singal-Voltage					
Backshell Material ①	Fiberglass Plastic	Fiberglass Plastic /Aluminum Plastic	Fiberglass Plastic			
Brightness (cd/㎡) ①②	6000		8000			8500
Refresh Rate (Hz)	3840					
Grey Level	14 Bit-16 Bit					
Viewing Angle (H/V)	160° / 160°	160° / 70°	160° / 91°	160° / 72°	160° / 91°	110° / 50°
Power Consumption Max. (W/㎡) ②	580					360
Power Consumption Avg. (W/㎡) ②	174					110
IP Rating (Front / Rear)	IP65 / IP54					
Maintenance	Rear	Front & Rear		Rear	Front & Rear	
Weight (kg/m²)	24					27
Working Temperature / Humidity	-30℃~50℃ / 10%~90% RH					
Storage Temperature / Humidity	-40℃~70℃ / 10%~90% RH					

①: Based on different hardware sepcification ②: Theoretical values only. All specifications are subject to the actual product.



Vivid Content Within Reaches

E Fine



Energy Saving



High Refresh Rate



Fast Heat Dissipation



Front & Rear Service



Magnetic Fixed Module

PRODUCT FEATURES

- High-quality Display, Instantly Visible
- Superior heat management and reliability with advanced materials and designs
- "Cool Screen Design" featuring energy-efficient technologies for up to 30% power savings
- Quick and clean installation with innovative latch system and hidden wiring
- IP65 protective design offers excellent stability under extreme whether



SPECIFICATIONS

Model	EFN-1.9SA	EFN-2.9SA
Pixel Pitch (mm)	1.95	2.98
Pixel Configuration	SMD+GOB	SMD
Module Size (mm) (H x W)	250×250	
Module Resolution (pixels) (H x W)	128×128	84×84
Cabinet Size (H x W)	500×500	
Cabinet Resolution (pixels) (H x W)	256×256	168×168
Driver Voltage ①	Singal-Voltage	Dual-Voltage
Backshell Material ①	Fiberglass Plastic	Aluminum Plastic
Brightness (cd/m²) ①②	4000	4800
Refresh Rate (Hz)	3840	
Grey Level	16 Bit	
Viewing Angle (H/V)	160° / 160°	
Power Consumption Max. (W/m²) ②	550	
Power Consumption Avg. (W/m²) ②	165	
IP Rating (Front / Rear)	IP65	
Maintenance	Front & Rear	
Weight (kg/m²)	31	
Working Temperature / Humidity	-30℃~50℃ / 10%~90% RH	
Storage Temperature / Humidity	-40℃~70℃ / 10%~90% RH	

①: Based on different hardware sepcification ②: Theoretical values only. All specifications are subject to the actual product.



Let Sunshine Embrace You

Velo 5



10,000+ Nits



Transparent



Anti-UV



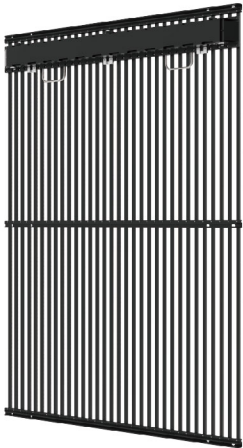
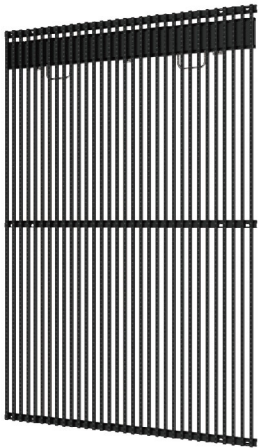
Front & Rear Service



Light & Thin

PRODUCT FEATURES

- In strict compliance with EMC Class B standards
- 10,000 nits ultra-high brightness, delivering vivid and clear images in the bright sunlight
- Super energy saving and environmentally friendly
- Up to 68% transparency helps to prevent natural lighting or view blocking
- Super quiet at work with patented fanless cooling design



SPECIFICATIONS

Model	VL5-1531SA
Pixel Pitch (mm)	15.625 / 31.25
Pixel Configuration	MiniLOB
Module Size (mm) (H x W)	1500×10 1000×10
Module Resolution (pixels) (H x W)	96×1 64×1
Cabinet Size (H x W)	1500×1000 1000×1000
Cabinet Resolution (pixels) (H x W)	96×32 64×32
Driver Voltage ①	Singal-Voltage
Backshell Material ①	Aluminum
Brightness (cd/m ²) ①②	8000 / 10000
Refresh Rate (Hz)	3840
Transparency	68%
Viewing Angle (H/V)	110° / 40°
Power Consumption Max. (W/m ²) ②	400
Power Consumption Avg. (W/m ²) ②	130
IP Rating	IP65
Maintenance	Front & Rear
Weight (kg/m ²)	13
EMC Grade	Class B
Working Temperature / Humidity	-30°C~50°C / 10%~90% RH
Storage Temperature / Humidity	-40°C~70°C / 10%~90% RH

①: Based on different hardware sepcification ②: Theoretical values only. All specifications are subject to the actual product.

INDOOR SERIES





Redefining Indoor
Fine-pitch LED Display

Lite Pro 3



16:9 Ratio



Large Viewing Angle



High Refresh Rate



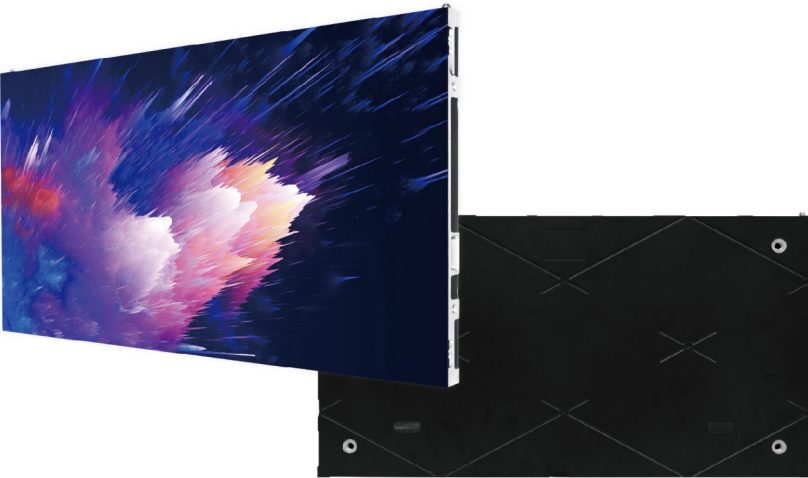
Light & Thin



Color Management

PRODUCT FEATURES

- Suitable for 2K/4K/8K Display
- Die-cast Aluminum Cabinet, High Precision
- Ultra-thin Cabinet (25mm)
- Smart Magnetic Design, Easy Front Maintenance



SPECIFICATIONS

Model	LPR3-0.9SF	LPR3-1.2SF	LPR3-1.5SF	LPR3-1.8SF	LPR3-2.5SF
Pixel Pitch (mm)	0.9375	1.25	1.5625	1.875	2.5
Pixel Configuration	SMD				
Module Size (mm) (H x W)	168.75×300				337.5×300
Module Resolution (pixels) (H x W)	180×320	135×240	108×192	90×160	135×120
Cabinet Size (H x W)	337.5×600				
Cabinet Resolution (pixels) (H x W)	360×640	270×480	216×384	180×320	135×240
Driver Voltage ①	Singal-Voltage				
Brightness (cd/㎡) ①②	600				
Refresh Rate (Hz)	3840				
Grey Level	14 Bit - 16 Bit				
Viewing Angle (H/V)	160° / 160°				
Power Consumption Max. (W/㎡) ②	400				
Power Consumption Avg. (W/㎡) ②	120				
IP Rating	IP20				
Maintenance	Front				
Weight (kg/m²)	22				
Working Temperature / Humidity	-10°C~40°C / 10%~85% RH				
Storage Temperature / Humidity	-40°C~70°C				

①: Based on different hardware sepcification ②: Theoretical values only. All specifications are subject to the actual product.



Convenient Front Maintenance Indoor Commercial Solution

Lite XL



16:9 Ratio



Large Viewing Angle



High Refresh Rate



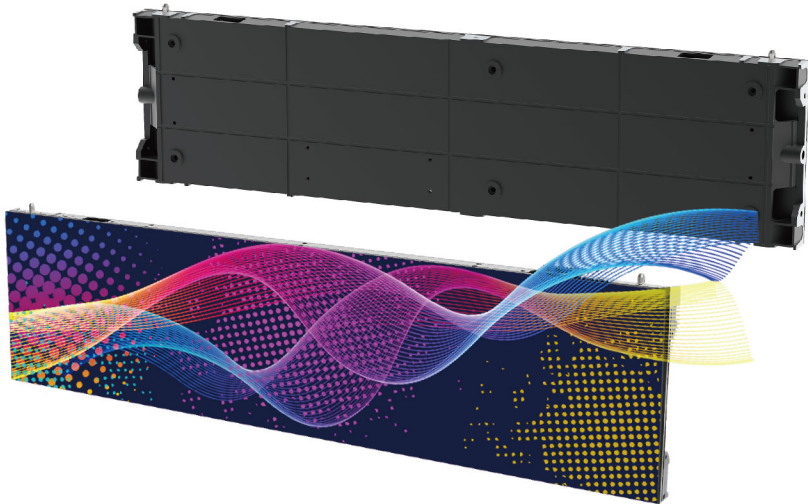
Light & Thin



Color Management

PRODUCT FEATURES

- 250mm×250mm Module Design, Flexible Assembly
- Die-cast Aluminum Cabinet, High Precision
- Smart Magnetic Design, Easy Front Maintenance
- Right-angled Display Available



SPECIFICATIONS

Model	LXL-1.9SF	LXL-2.6SF	LXL-3.9SF
Pixel Pitch (mm)	1.95	2.6	3.9
Pixel Configuration	SMD		
Module Size (mm) (H x W)	250×250		
Module Resolution (pixels) (H x W)	128×128	96×96	64×64
Cabinet Size (H x W)	250×1000		
Cabinet Resolution (pixels) (H x W)	128×512	96×384	64×256
Driver Voltage ①	Singal-Voltage		
Brightness (cd/m ²) ①②	800		
Refresh Rate (Hz)	3840		
Grey Level	14 Bit - 16 Bit		
Viewing Angle (H/V)	160° / 160°		
Power Consumption Max. (W/m ²) ②	400		
Power Consumption Avg. (W/m ²) ②	120		
IP Rating	IP20		
Maintenance	Front		
Weight (kg/m ²)	26		
Working Temperature / Humidity	-10℃~40℃ / 10%~85% RH		
Storage Temperature / Humidity	-40℃~70℃		

①: Based on different hardware sepcification ②: Theoretical values only. All specifications are subject to the actual product.

imposa CONTROLLERS



Chain Station

- Chain Master
- Mager Pro
- Chain Go
- Chain CMS

Electrical Parameters	Input Power	100-240V~ , 50/60Hz , 40A
	Maximum Power Consumption	18W
Storage Space	RAM	2GB
	Storage	32GB
Operating Environment	Temperature	-20℃ ~ +60℃
	Humidity	0%RH ~ 80%RH, no condensation
Storage Environment	Temperature	-40℃ ~ +80℃
	Humidity	0%RH ~ 80%RH, no condensation
Physical Specifications	Dimensions	298mm ×136mm ×45mm
	Weight	1500g
Protection Rating	IP65	
Loading Capacity	Max Capacity	2.3 million pixels
	Max Width	4096 pixels
	Max Height	4096 pixels
	Max Current	40A
Input	1x HDMI 1.3	
	2x Brightness Sensor Ports	
	1x AC Power Input	
	1x SIM card port	
	1x TF card port	
	2x Megabyte Ethernet port	
	2x Power & Data Ports (650K Pixels Max.)	
Output	2x Data Backup Ports (RJ45)	

Hardware

MPU9000

- Video Processor
- Full-HD Media Player
- LED Display Controller
- SWITCH
- 4K Support



PRODUCT FEATURES

- Integrated with Shortcut Switches, Monitor, Video Processor, Full-HD Media Player and LED Display Controller
 - Support DisplayPort 1.2,HDMI 1.4, dual-link DVI and 3G SDI Inputs
 - Support daisy chaining of monitors of up to four streams
 - Advanced Faroudja® video processing: MADi and DCDi
 - 12bits Processing
 - 6-axis color control independent of ACC
 - 4K×2K screen resolution support
- Support Genlock
 - Built-in Monitor
 - SPDIF Output by coaxial
 - Built-in 6.5mm audio jack
 - 6G LED Display Data Link
 - Support SD Card and mSATA SSD
 - Mass Storage Devices
 - Support Gigabit Ethernet

SPECIFICATIONS

	Type	Complete Version	Connector	Details
Input	DisplayPort	1	Displayport Standard	Support DisplayPort 1.2. Max.3840 2160@30Hz
	HDMI	3	HDMI Standard	Support HDMI 1.4 Max.3840×2160@30Hz
	DVI	2	DVI-I	Analog inputs not supported. DVI1 Supports dual-link Max.2560×1600@60Hz
	SDI	1	BNC	Support SMPTE 425M-Level A(3G-SDI), SMPTE 292M(HD-SDI), SMPTE 259M-C(SDI)
	VGA	1	HD-15	Max.1080P@60Hz
	Y Pr Pb	1	3.5mm jack	Max.1080P@60Hz
	Genlock	1	BNC	SD bi-level and HD tri-level sync, PAL, NTSC, 720p, 1080i/p, 576i/p, 480i/p
Output	DisplayPort	1	Displayport Standard	Support DisplayPort 1.2. Max.3840×2160@30Hz
	HDMI	1	HDMI Standard	HDMI1.4.Supports 12 Bit deep color
	DVI	1	DVI-I	Loop out from DVI2 input
	SDI	1	BNC	Loop out from SDI input
	Genlock	1	BNC	Loop out from Genlock Input
	SPDIF	1	RCA	Support standard S/PDIF for stereo LPCM or compressed audio up to 192 kHz
	Headphone	1	6.5mm audio jack	Stereo Audio Output
Other	LED Datalink	6	Neutrik etherCON	1Gbps/port
	Control Methods	USB, Gigabit Ethernet, IR, HMI on the Front Panel		
	Power	Neutrik powerCON connector, 100-240 VAC, 50-60 HZ, Max.25W		
	Temperature	-20°C~50°C		
	Dimension	472×375×90 mm		
	Weight	4.5kg		

Hardware LDU8600



Indoor Version



Outdoor Version

SPECIFICATIONS

Model	LDU8600	
Internal Storage	4G	
Extended Memory	Up to 64G SD card, U Disk,SSD	
DVI/HDMI signal input	HDMI×1, DVI×1	
Resolution of DVI/HDMI input	1920×1080@60Hz, 3840×2160@30Hz	
Control Mode	Synchronous & asynchronous	
Communication	Ethernet, Rs232, RS485	
LED Datalink	Gigabit Ethernet Transceiver × 6 (Each port can control 620,000 pixels)	
Video decoder	1920×1080@30Hz	
Video format	H.264, H.263, MPEG-4/2/1, MV, VC1, Divx	
Brightness control	256 levels auto, manual or timing control	
Sensor	Temperature, Humidity	
Control Panel	Yes	
Temperature	-20 °C~50 °C	
Dimension	482×380×44mm (L×W×H)	
Weight	2.6kg (Indoor Model) 4.5kg (Outdoor Model)	

Hardware LDU4100



Indoor Version



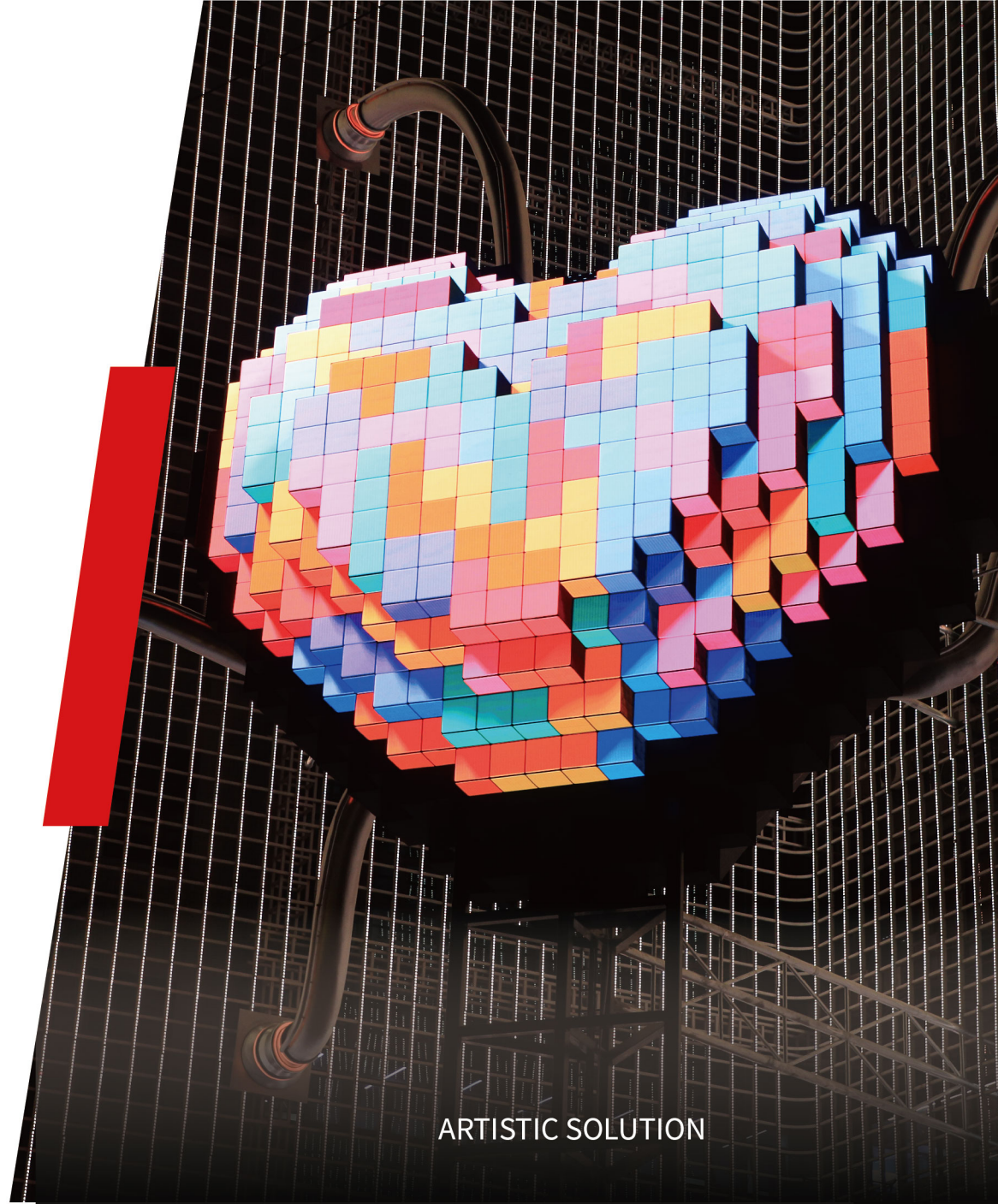
Outdoor Version

SPECIFICATIONS

Model	LDU4100	
Internal Storage	4GB	
Extended Memory	Up to 64G SD card, U Disk	
DVI/HDMI signal input	HDMI × 1	
Resolution of DVI/HDMI input	1920×1080@60Hz	
Control Mode	Synchronous & asynchronous	
Communication	Ethernet, Rs232, Rs485, 3G Modem	
LED Datalink	Gigabit Ethernet Transceiver × 4 (Each port can control 650,000 pixels)	
Video decoder	1024×768@30Hz	
Video format	H.264, H.263, MPEG-4/2/1, MV, VC1, Divx	
Brightness control	256 levels auto, manual or timing control	
Sensor	Temperature, Humidity	
Control Panel	No	
Temperature	-20 °C~50 °C	
Dimension	482×380×44mm (L×W×H)	
Weight	2.6kg (Indoor Model) 4.5kg (Outdoor Model)	

CHAINZONE SOLUTIONS

www.chainzone.com



ARTISTIC SOLUTION



SPORT SOLUTION



DOOH SOLUTION



INDOOR SOLUTION



SIGNAGE & INFORMATION SOLUTION



DOOH SOLUTION

Aim to Maximize Advertising Revenue with Ultra Visual Performance and Lower Lifecycle Costs.

Billboard

Offer large-scale, eye-catching, and dynamic advertising platforms, maximizing brand exposure and enhancing audience reach for the clients.

Recommended Products: V-Plus, PLus X

- High Stability
- Low Power Consumption
- Comprehensive Monitoring System



Digital Signage

Offer dynamic display technology that enhances communication and boosts audience engagement by 75% through real-time, cloud-based content updates, creating impactful connections with customers across various settings.

Recommended Products: Plus X, PLus 4, V-Plus

- High Stability
- Good Display Effect
- Comprehensive Monitoring System



Street Furniture

Offer energy-efficient, high-impact advertising solutions that enhance visibility and engagement in public spaces, leveraging advanced technology for dynamic content delivery and environmental sustainability.

Recommended Products: E Fine, PLus 4

- Good Display Effect
- High protection Property



Wallscape & Spetacular

Offer large-scale, visually striking advertising experiences that transform urban landscapes into captivating canvases, creating unforgettable brand impressions and maximizing social media engagement with their dramatic and innovative displays.

Recommended Products: V-Plus, E4 Pro, E XL, Plus 4

- High Stability
- Good Display Effect





SIGNAGE & INFORMATION SOLUTION

Chainzone signages are dedicated to amplifying your presence in local communities and boosting in-store success.

Electronic Message Sign

EMS is the most effective dynamic advertising medium and a source of community information sharing. Chainzone offers premium modular EMS displays with flexible sizes, enabling rapid assembly and helping boost inventory sale.

Recommended Products: V-Plus, PLus X

- High Stability
- Wide Viewing Angle



Digital Bridge

Digital bridge is an effective platform for roadside advertising.
Chainzone provides basic display screens of highstability, most suitable for the application scenarios.

Recommended Products: E4 Pro, E XL, E4 H

- High Stability
- Low Power Consumption
- Comprehensive Monitoring System



Price Display

Gas station price displays are all-in-one display devices specially built for gas stations. Chainzone multi-functional price displays (including steel structures) deliver brilliant display of information, advertising, weather and gas/oil flow together.

Recommended Products: V-Plus, PLus 4

- High Stability
- Wide Viewing Angle





SPORTS SOLUTION

Chainzone, trusted partner for delivering unforgettable sports day experiences.

Perimeters

Provide vivid, high-resolution advertising and information platforms around sports venues, enhancing viewer experience and offering dynamic branding opportunities.

Recommended Products: E XL, E4 Pro

- High Refresh Rate
- Quick Installation
- Enhanced Dual Protection for Both Players and Displays
- Hot-standby Power Supply Design



Scoreboards

Nowadays, scoreboards in the stadiums are not only used to display the score of the game, but also become the center of attention for replays of game action. Larger and larger scoreboards become the prime opportunities for sponsors and advertising.

Recommended Products: V-Plus, PLus 4, E4 Pro

- Ultimate Display Effect
- Wide Viewing Angle



Centerhungs

Centerhung LED displays provide an immersive and interactive in-venue experience with high-definition visuals, enhancing the fan engagement and delivering a dynamic viewing environment for live sports and events.

Recommended Products: V-Plus, E4 Pro

- High Refresh Rate
- Ultimate Display Effect
- Wide Viewing Angle



Ribbon

To capture the attention of the audience sitting near the mid-tier is also an important way to upgrade the whole level of your stadium.

Recommended Products: V-Plus, PLus 4

- High Refresh Rate
- Top or Front Maintenance Available
- Quick Installation
- Wide Viewing Angle



INDOOR SOLUTION

Premium Chainzone indoor displays, boasting high stability, are suitable for multi-types of commercial indoor scenes.

Command Center

Provide high-resolution, real-time visual data that enhances situational awareness, improves decision-making, and streamlines coordination among various teams.

Recommended Products: Lite Pro 3

- High Stability



Conference Room

Offer high-impact visual communication, enhancing presentations and collaboration by delivering crisp visuals and dynamic content in a professional setting.

Recommended Products: Lite Pro 3

- High Stability

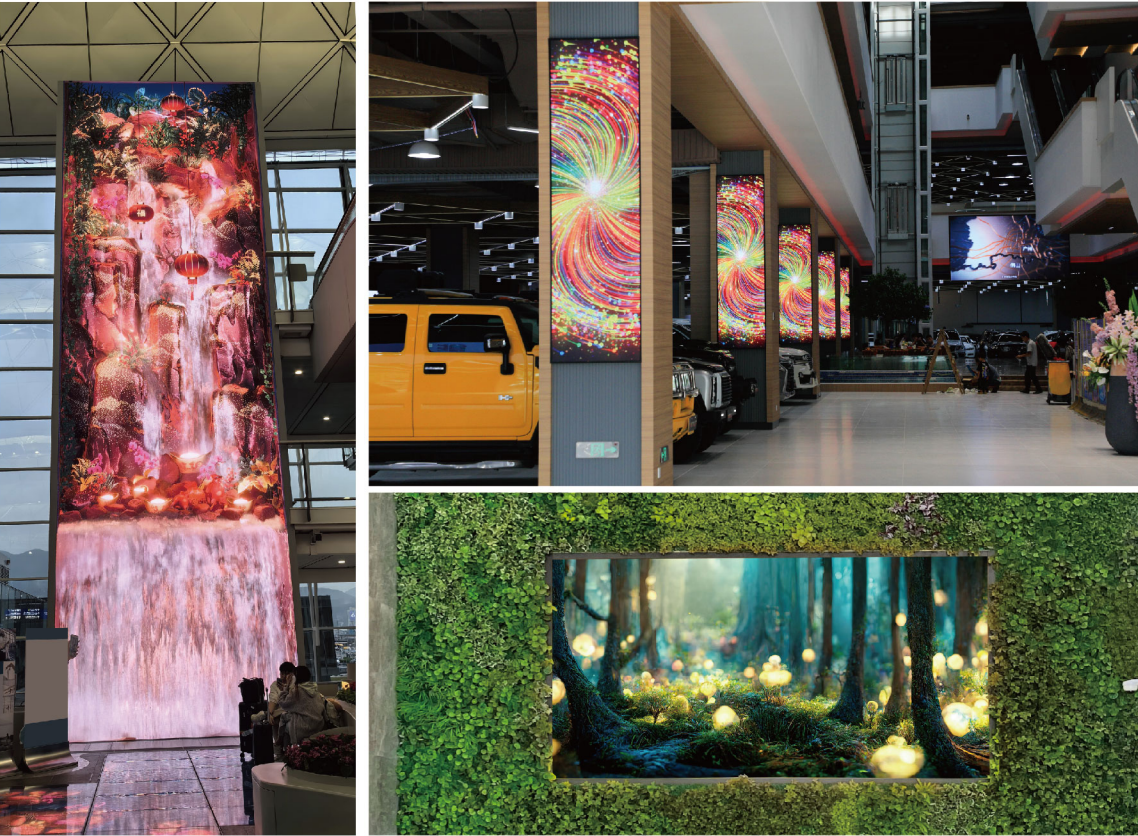


Comercial Display

Offer high-resolution, dynamic content delivery that captivates audiences and enhances brand visibility, making them an effective tool for advertising and information dissemination.

Recommended Products: Lite XL, Lite Pro 3

- Ultimate Display Effect
- Wide Viewing Angle





ARTISTIC SOLUTION

Your expert partner for artistic LED display project

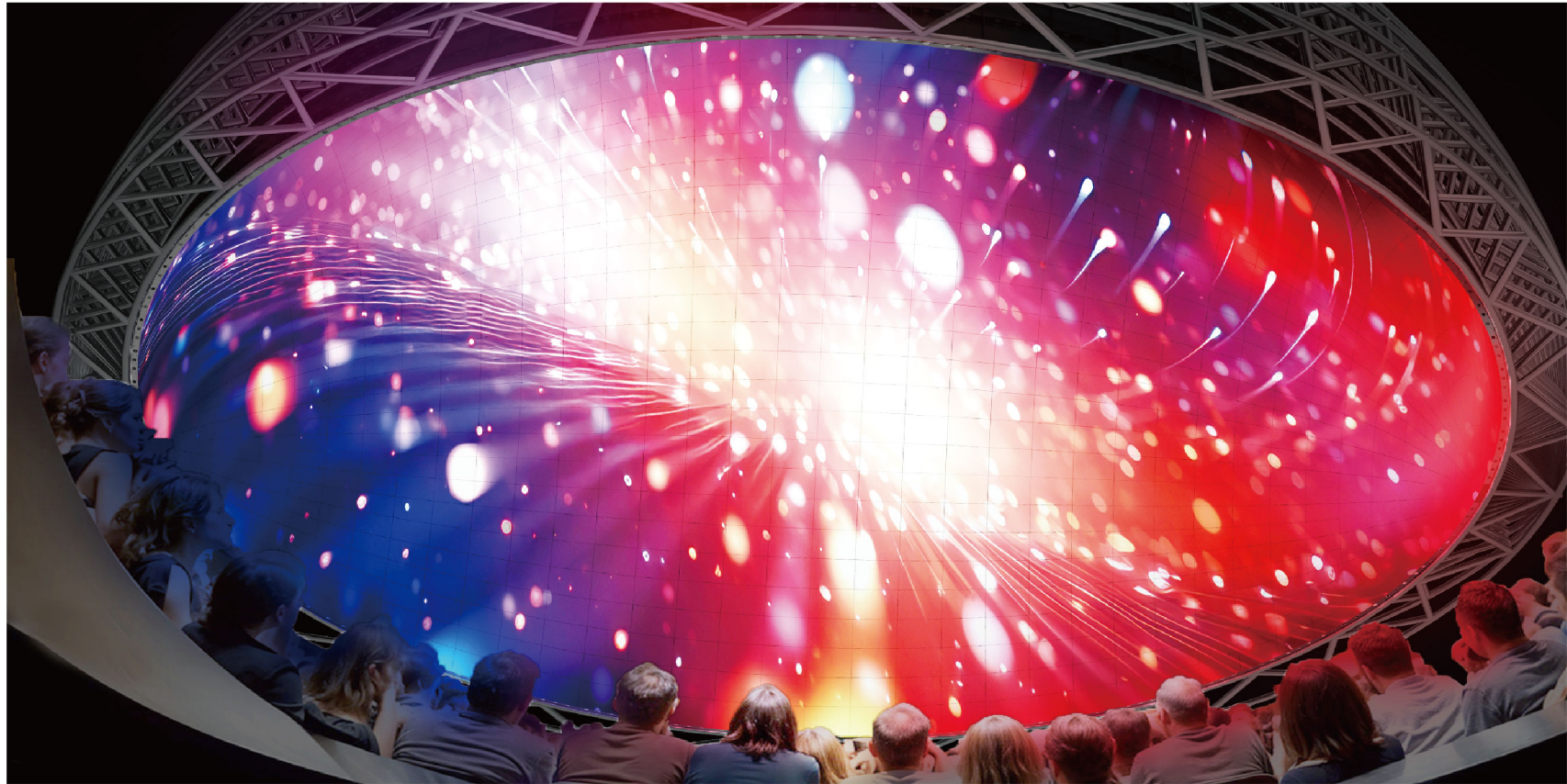
Sphere

- Ultimate Display Effect
- Professional delivery capabilities



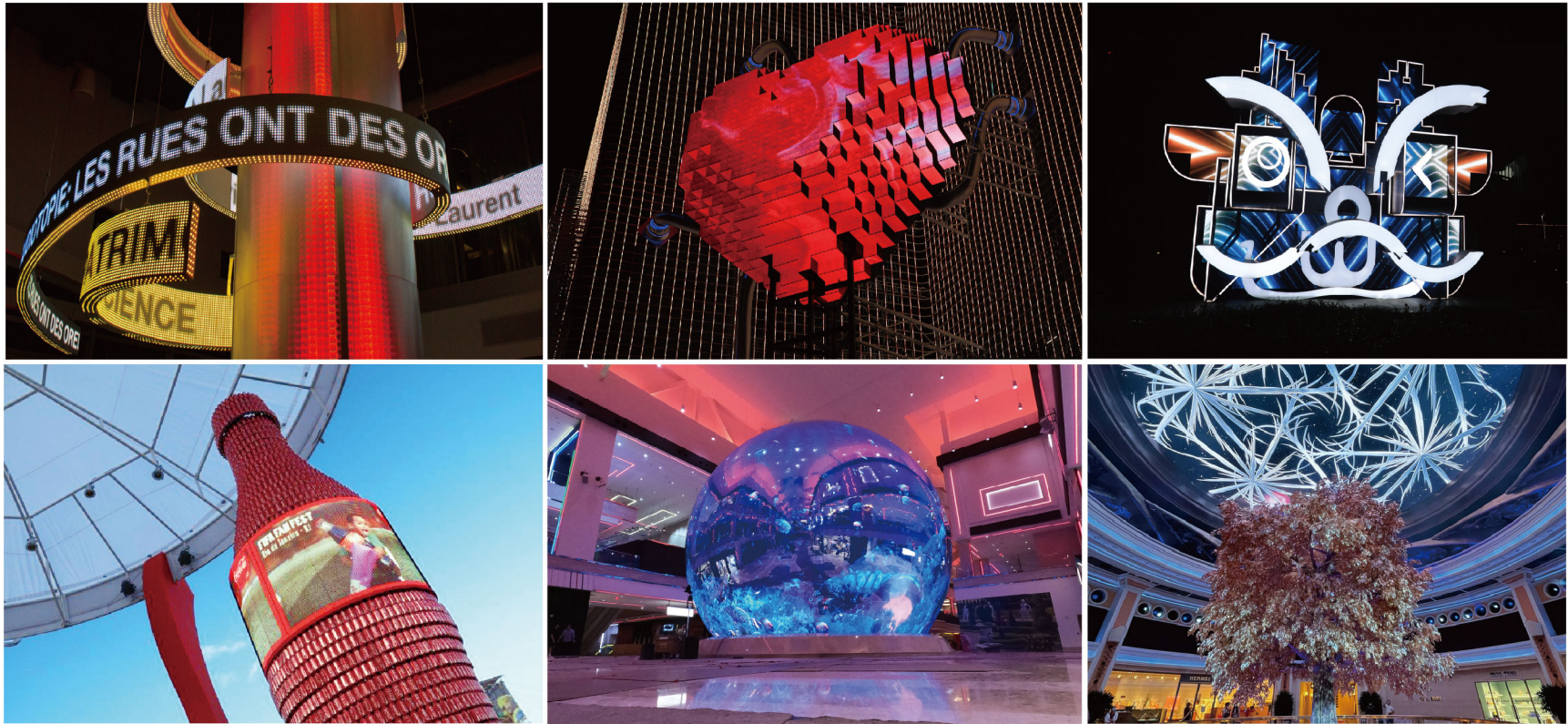
Dome

- Ultimate Display Effect
- Audio Transparency and Smoke Safety



More Possibilities

- Excellent image quality
- Integrated design from module to structure, from hardware to software
- Professional team with rich experience and outstanding service
- Turnkey solution with high performance and satisfaction





CHAINZONE
Visualize Beauty of World