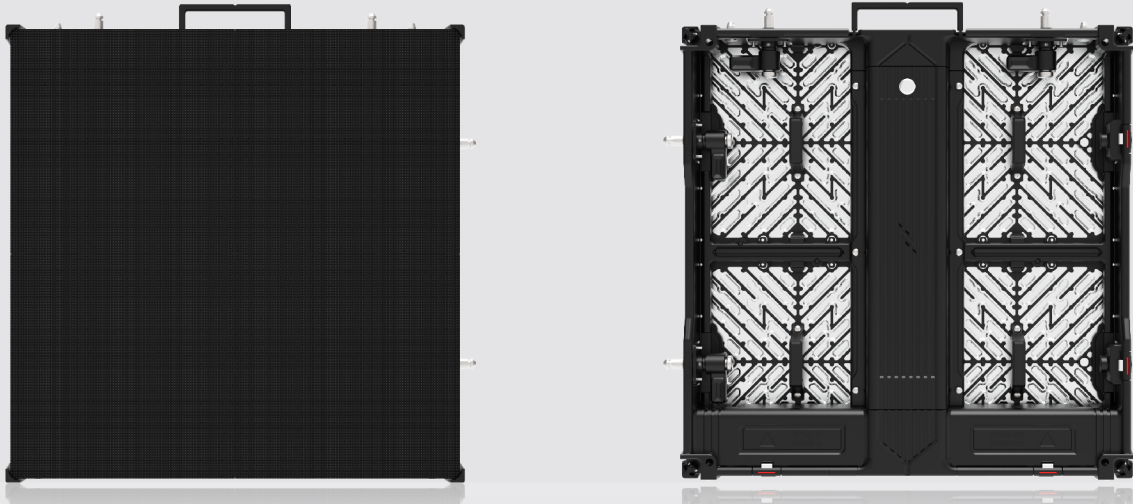


E Fine

OUTDOOR DISPLAY



Cabinet



Benefits

- High-quality Display, Instantly Visible
- Superior heat management and reliability with advanced materials and designs
- "Cool Screen Design" featuring energy-efficient technologies for up to 30% power savings
- Quick and clean installation with innovative latch system and hidden wiring
- IP65 protective design offers excellent stability under extreme weather

Product Features



Energy Saving



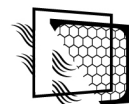
High Refresh Rate



High Contrast Ratio



Large Viewing Angle



Fast Heat Dissipation



Magnetic Fixed Module



High Flatness



Front & Rear Service



Easy Assembly



Easy Maintenance



Model

E Fine Series : EFN-1.9SA | EFN-2.9SA

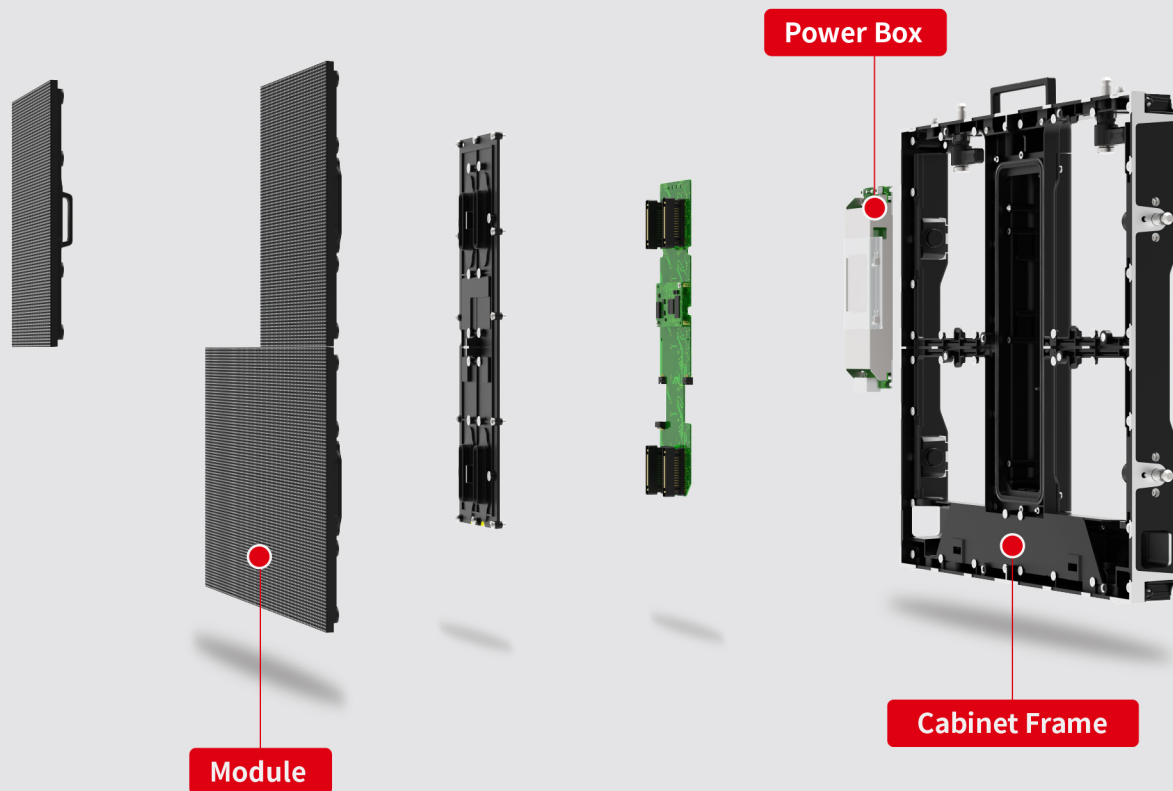
Specifications

E Fine Series

| Model | EFN-1.9SA | EFN-2.9SA |
|--|-------------------------|------------------|
| Pixel Pitch (mm) | 1.95 | 2.98 |
| Pixel Configuration | SMD+GOB | SMD |
| Module Size (mm) (H x W) | 250×250 | |
| Module Resolution (pixels) (H x W) | 128×128 | 84×84 |
| Cabinet Size (H x W) | 500×500 | |
| Cabinet Resolution (pixels) (H x W) | 256×256 | 168×168 |
| Driver Voltage ① | Singal-Voltage | Dual-Voltage |
| Backshell Material ① | Fiberglass Plastic | Aluminum Plastic |
| Brightness (cd/m ²) ①② | 4000 | 4800 |
| Refresh Rate (Hz) | 3840 | |
| Grey Level | 16 Bit | |
| Viewing Angle (H/V) | 160° / 160° | |
| Power Consumption Max. (W/m ²) ② | 550 | |
| Power Consumption Avg. (W/m ²) ② | 165 | |
| IP Rating (Front / Rear) | IP65 | |
| Maintenance | Front & Rear | |
| Weight (kg/m ²) | 31 | |
| Working Temperature / Humidity | -30°C~50°C / 10%~90% RH | |
| Storage Temperature / Humidity | -40°C~70°C / 10%~90% RH | |

①: Based on different hardware sepcification ②: Theoretical values only. All specifications are subject to the actual product.

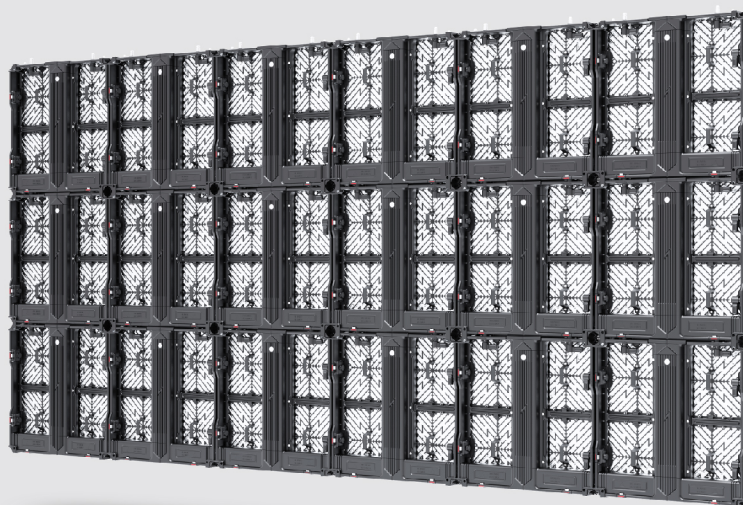
Exploded View



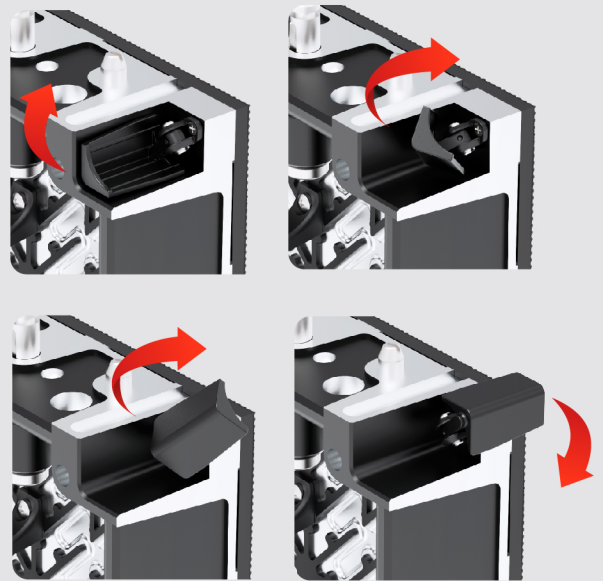
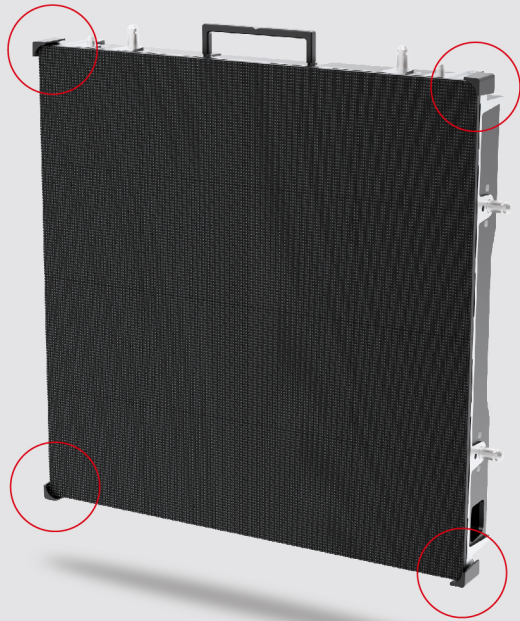
Hidden wiring design creates a tidy and pleasing screen structure.

Multiple installation ways available:

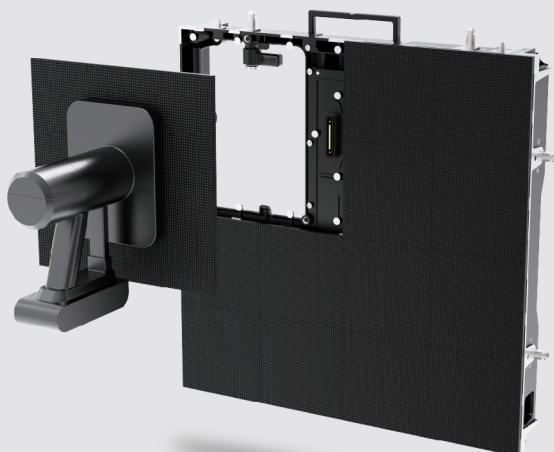
- Wall-mounted Installation
- Hanging Installation
- Pole-mounted Installation
- Standing Installation



Corner-protection design ensures safer shipments of cabinets and modules.



Entirely Front & Rear Dual Service, Efficient and Fast



Front Service



Rear Service



Beyond What You Can See



CHAINZONE TECHNOLOGY (FOSHAN) CO., LTD.

📍 Chainzone Tech. Industrial Park, Taishan Bei Rd., Sanshan Avenue,
Nanhai District, Foshan, Guangdong, P.R. China 528200

☎ +86-757-86393001

✉ sales@chainzone.com 🌐 www.chainzone.com